

Roadway Improvements to County Route 537 Corridor between Sentinel Road and US Route 9 Interchange – Local Preliminary Engineering Phase

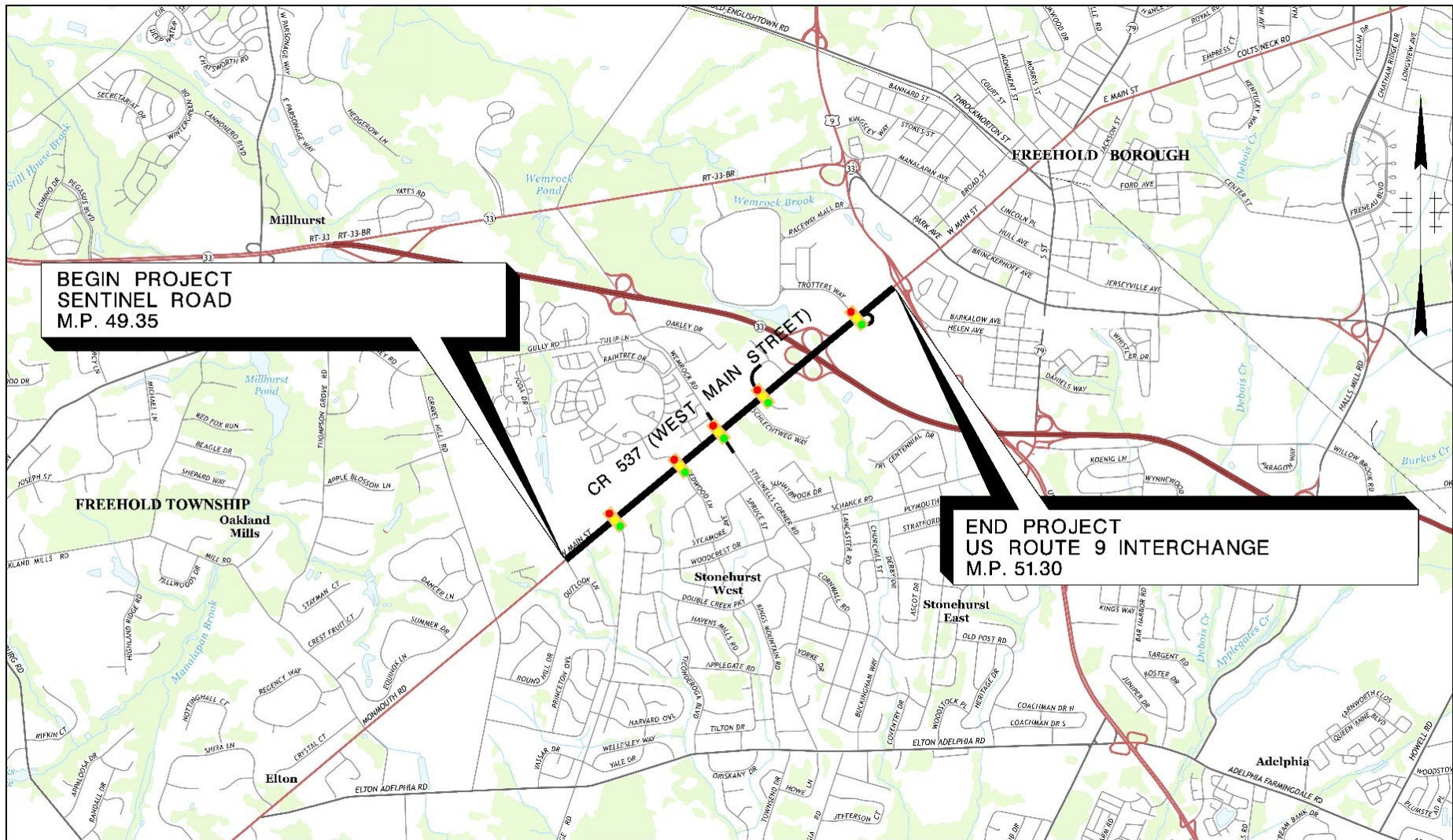


Community Stakeholders Meeting No. 1
February 15, 2017



U.S. Department of Transportation
**Federal Highway
Administration**





Project Location Map

Total Length of Project = 10,300 LF (1.95 Miles)

Project Overview

- The purpose of this project is to improve traffic safety, reduce traffic congestion, and provide better accommodations for various modes of transportation along the Monmouth County Route 537 Corridor
- Federal funding being utilized for design and construction of the roadway improvements for through Local Capital Project Delivery Process (LCPDP)
- Improvements US Route 9 and NJ Route 33 interchanges are not part of this project
- Local Concept Development (LCD) completed in March 2013 under LCPDP Phase I
- Local Preliminary Engineering (LPE) is the start of LCPDP Phase II and completion anticipated for February 2018

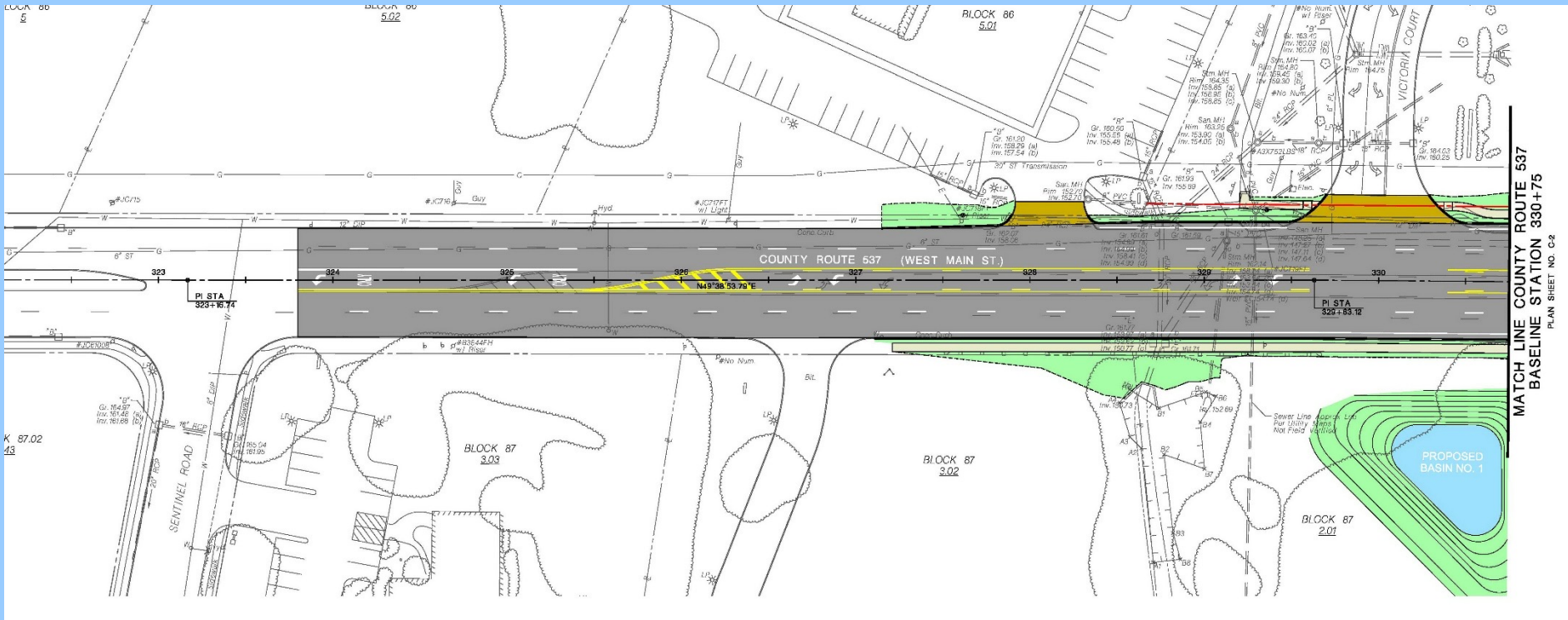
NJTPA Local Capital Project Delivery Process

| Local Concept Development (LCD) MARCH 2013 | Local Preliminary Engineering (LPE) | Final Design (FD)/ Right of Way Acquisition | Construction |
|--|---|--|--|
| Purpose and Need Statement | Approved Design Exception Report | Construction Contract Documents and PS&E package | Complete Construction |
| Concept Development & Alternatives Analyses | Cost Estimates (Final Design, ROW and Construction) | Environmental Reevaluations | Continue Public Outreach |
| Selection of Preliminary Preferred Alternative | Approved Environmental Document | Secure Environmental Permits | As-Built |
| Environmental Screening Report & NEPA Classification | Preliminary Design | Acquisition of ROW | Update and Finalize Design Communications Report |
| Concept Development Report | Preliminary Engineering Report | Final Utility Relocation Schemes | Close-out Documentation |
| Initiate Public Outreach & Involvement | Continue Public Outreach & Involvement | Continue Public Outreach & Involvement | |

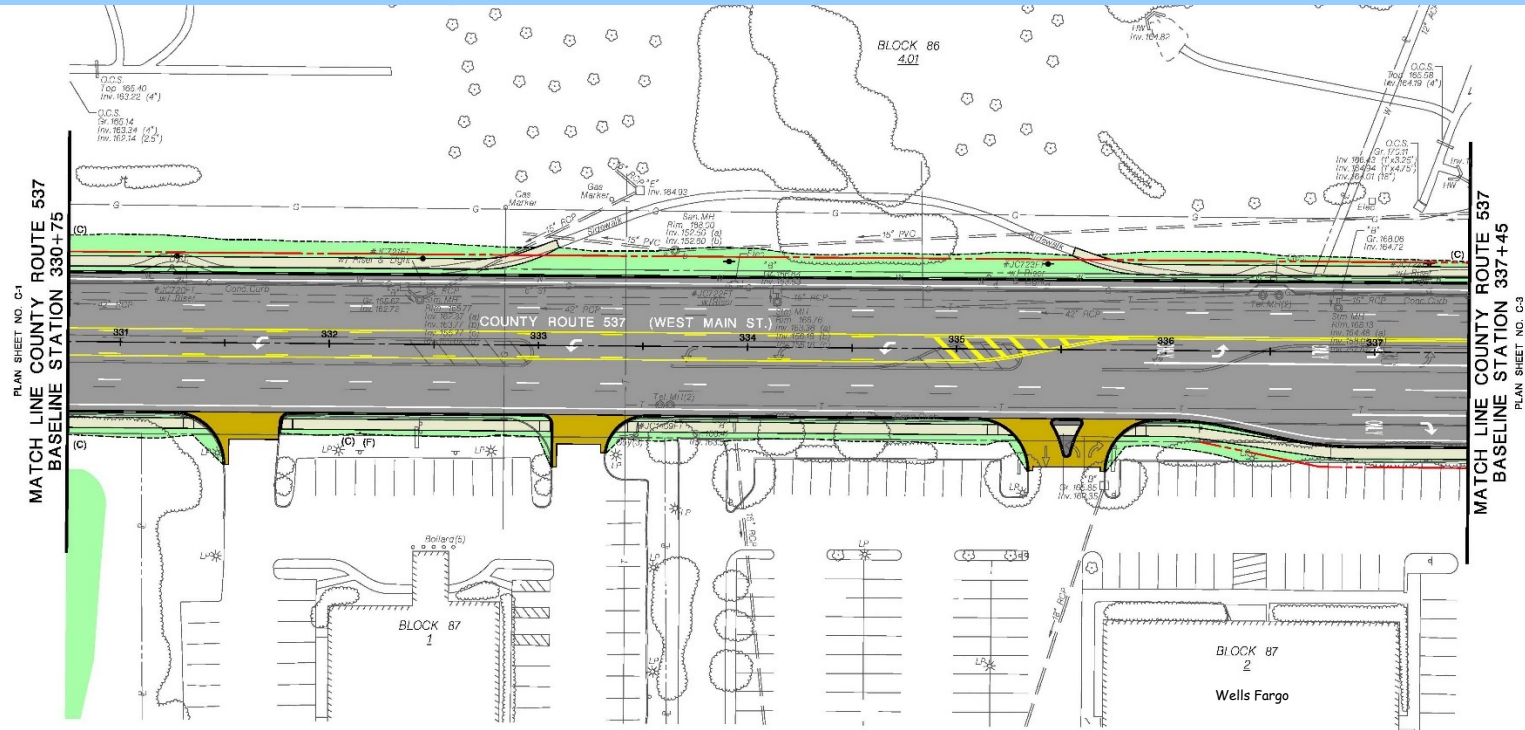
Project Considerations

- All approved/under construction developments generated traffic included in volume projections for 2032
- Bellemead Development Phase I (400 residential units) with conditional approval also included

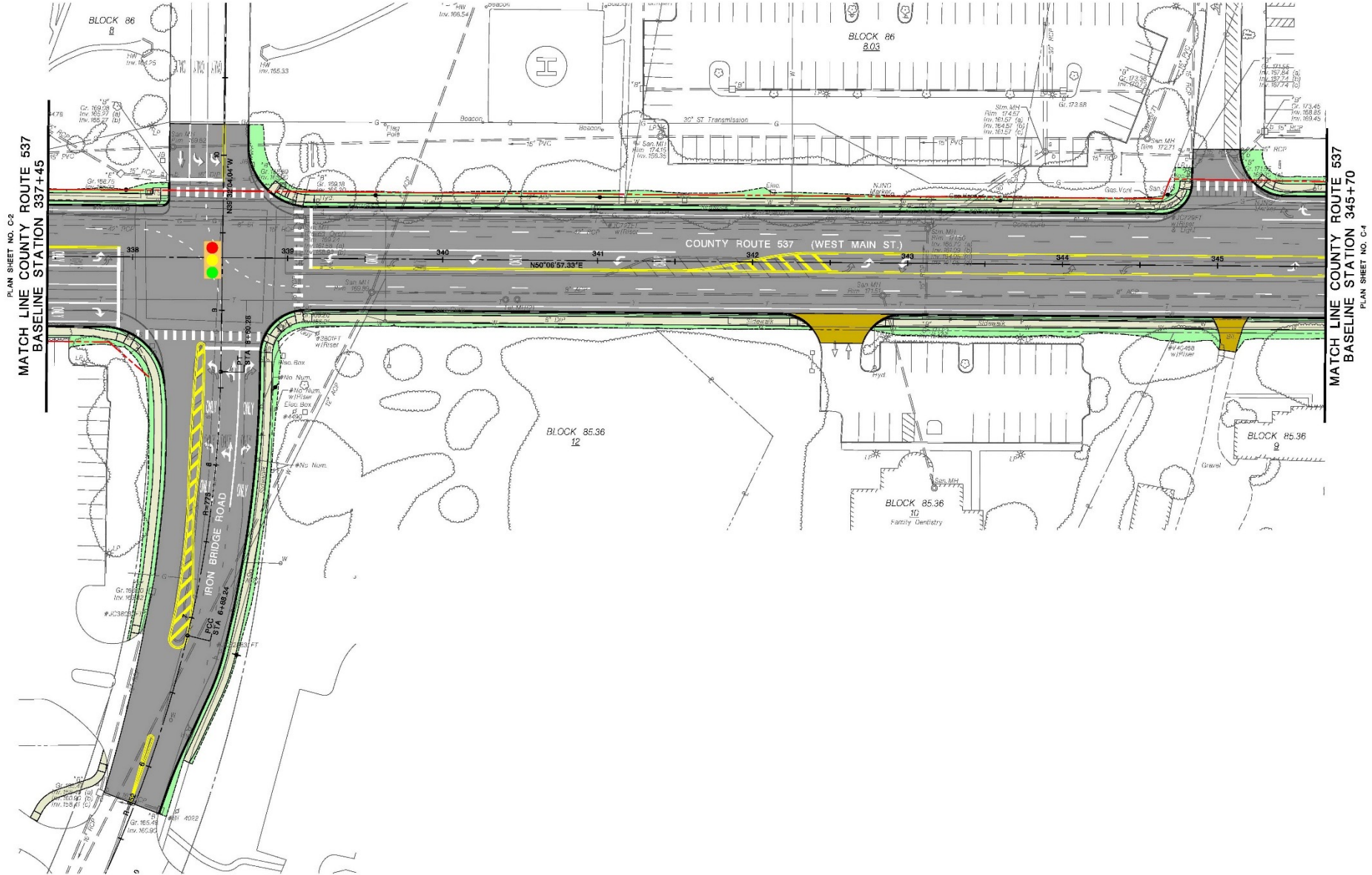
Local Preliminary Engineering Plans - 2017



Local Preliminary Engineering Plans - 2017



Local Preliminary Engineering Plans - 2017



MATCH LINE COUNTY ROUTE 537
BASELINE STATION 345+70



PLAN SHEET NO. C-4

MATCH LINE COUNTY ROUTE 537
BASELINE STATION 354+25

Fullon Bank
BLOCK 86
12

355 356 357 358 359 360

COUNTY ROUTE 537 (WEST MAIN ST.)

VILLAGE CENTER DR

REDWOOD LANE

TD Bank

BLOCK 85.12
23

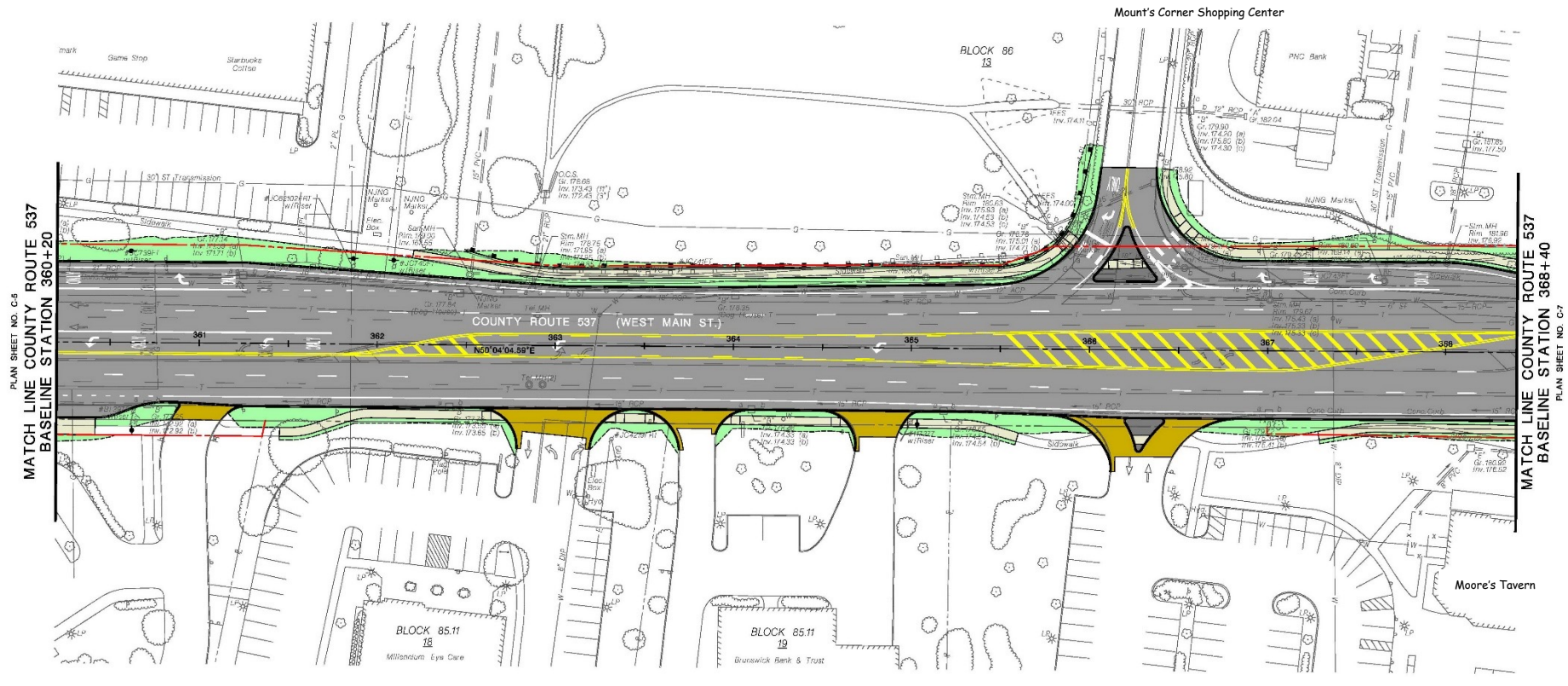
Bank of America

BLOCK 85.11
17

MATCH LINE COUNTY ROUTE 537
BASELINE STATION 360+20

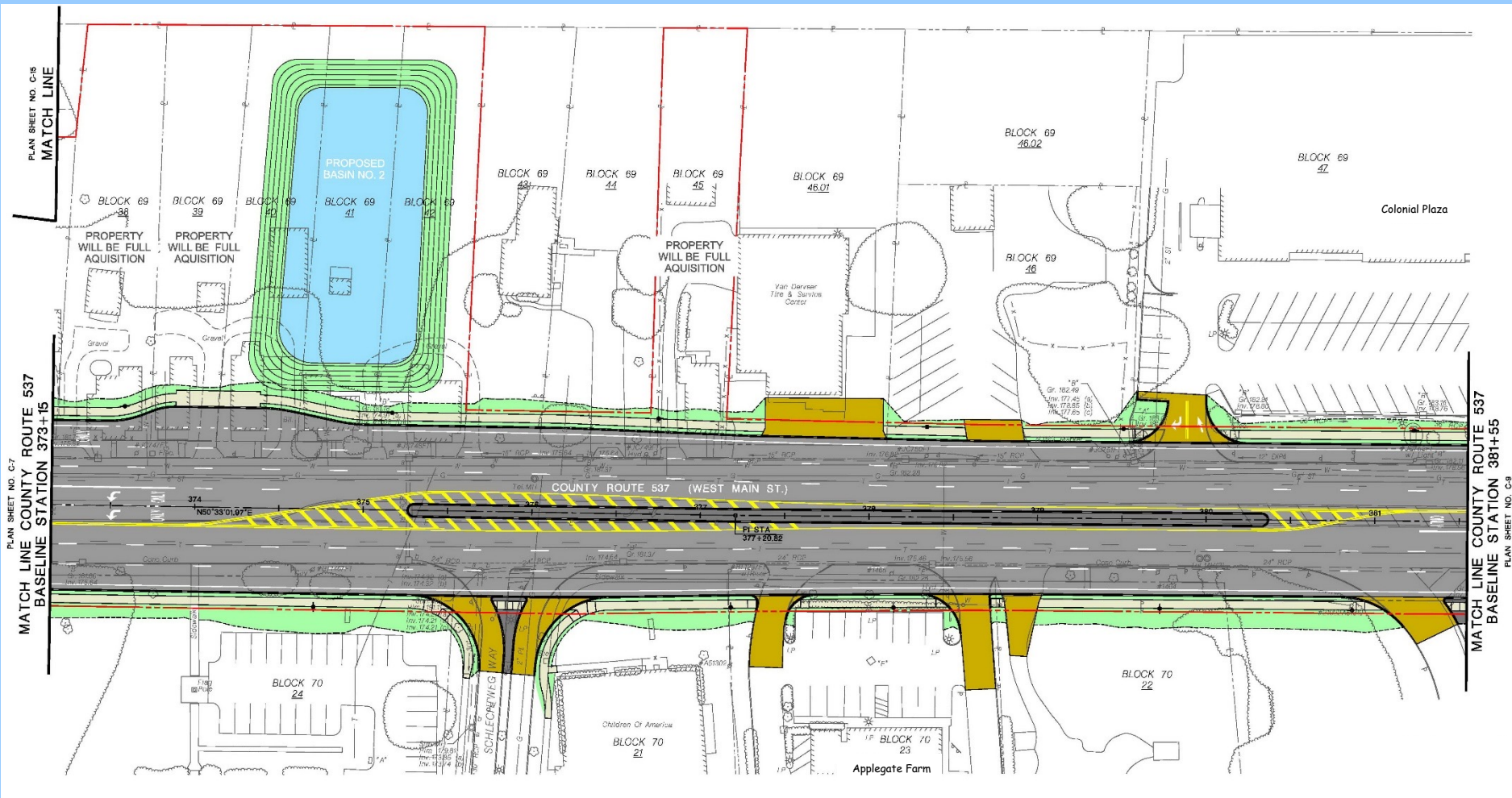
PLAN SHEET NO. C-6

Local Preliminary Engineering Plans - 2017

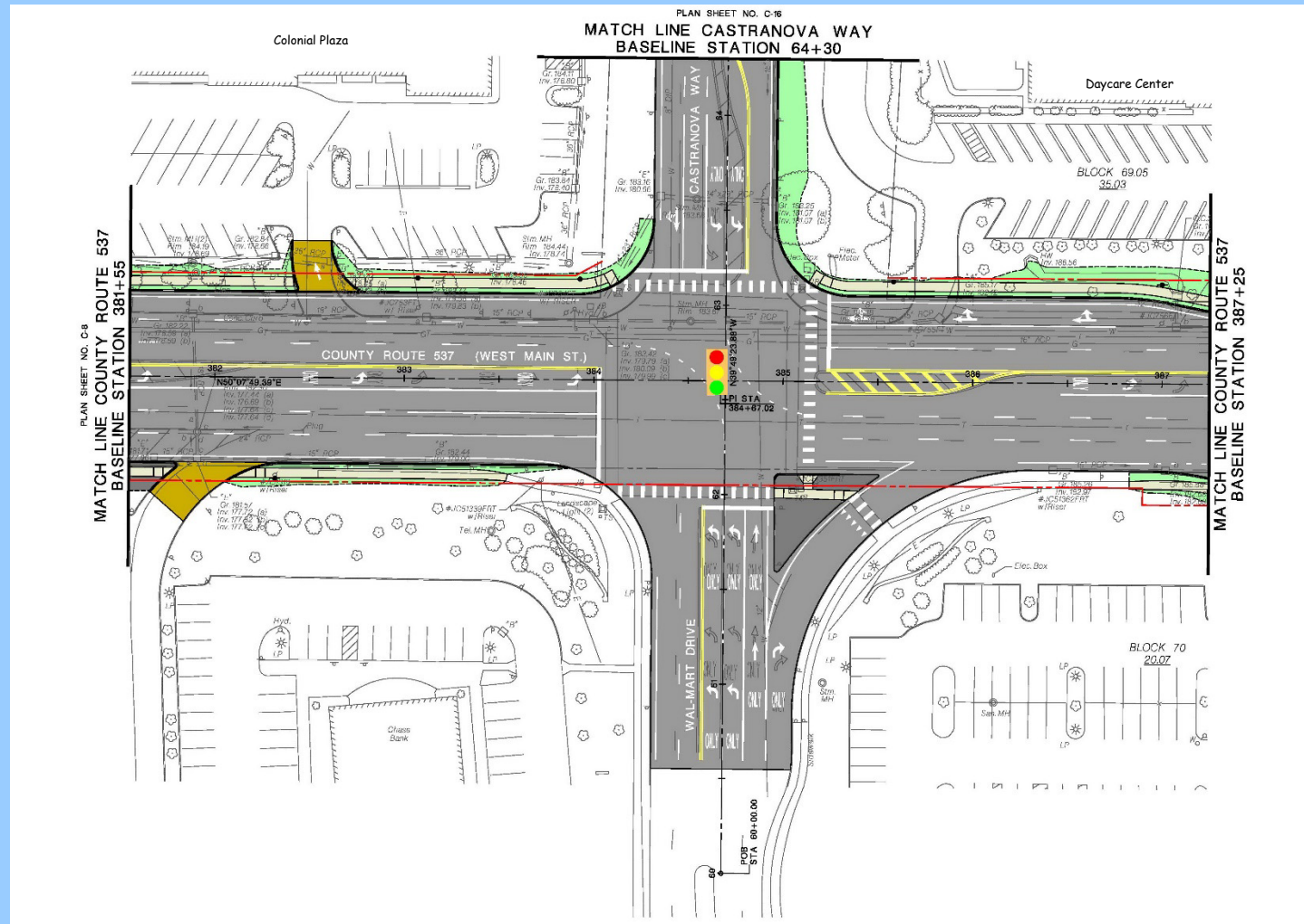


[illegible]

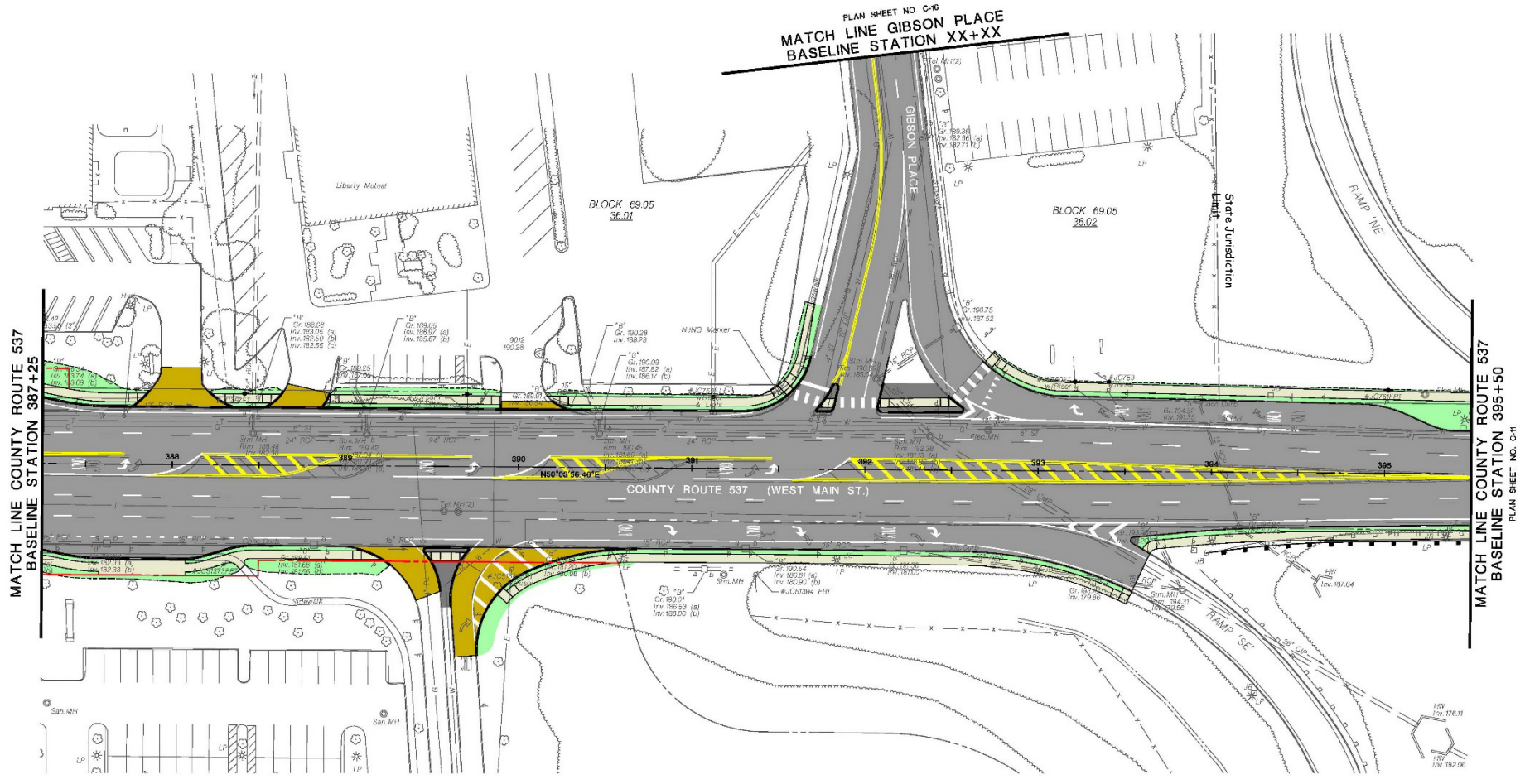
Local Preliminary Engineering Plans - 2017



Local Preliminary Engineering Plans - 2017



Local Preliminary Engineering Plans - 2017



PLAN SHEET NO. C-9

MATCH LINE COUNTY ROUTE 537
BASELINE STATION 395+50

PI STA
395+82.28

RAMP 'NE'

RAMP 'NW'

RAMP 'EW'

RAMP 'EN'

STATE ROUTE 33 SOUTH BOUND

STATE ROUTE 33 NORTH BOUND

COUNTY ROUTE 537 (WEST MAIN ST.)

396

397

398

399

400

401

402

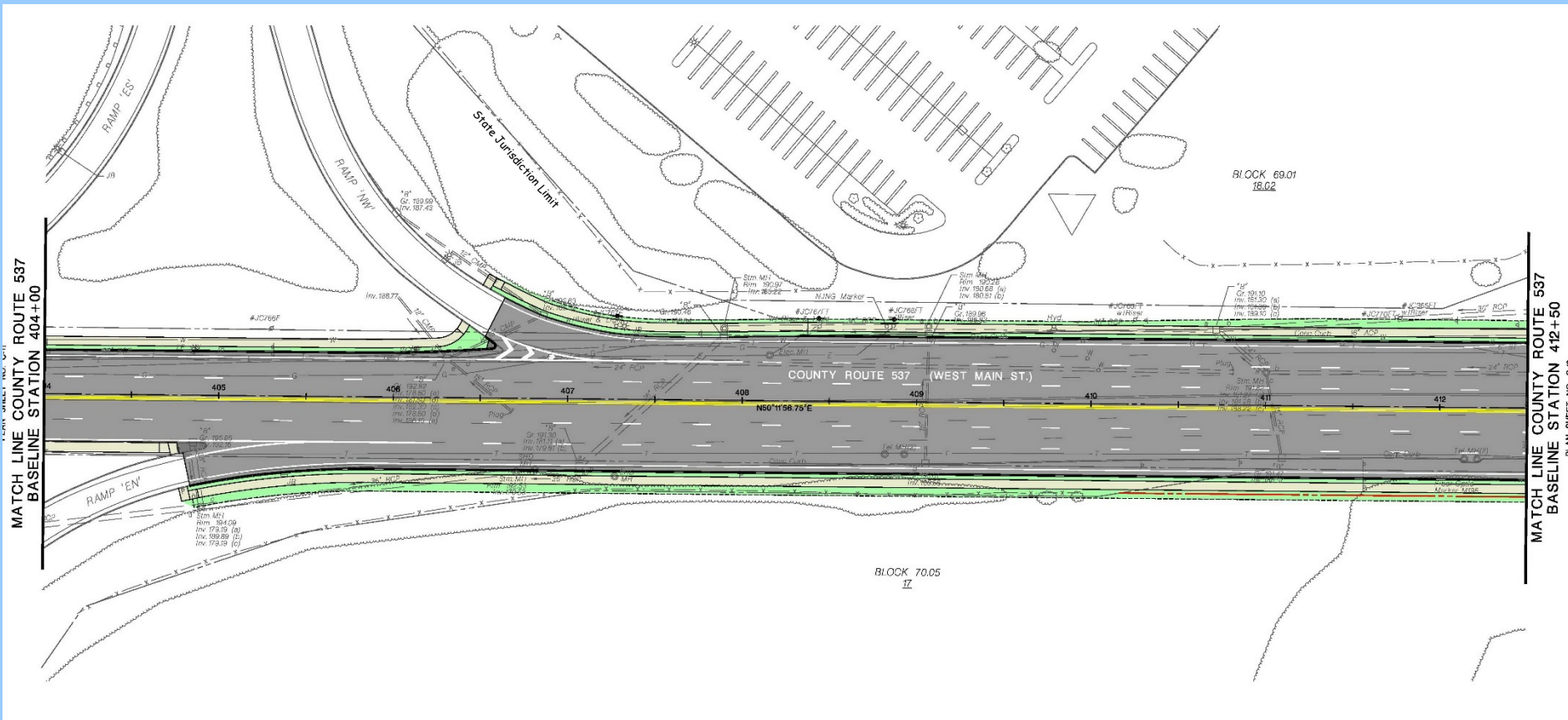
403

404

PLAN SHEET NO. C-9

MATCH LINE COUNTY ROUTE 537
BASELINE STATION 404+00

Local Preliminary Engineering Plans - 2017



Plan view of Stillwells Corner Road. The road is shown with stationing from 27 to 34. Key features include:

- Stationing:** 27, 28, 29, 30, 31, 32, 33, 34.
- Right-of-Way (R.O.W.):** 12' R.O.W. is indicated on the left side.
- Centerline:** N35°25'53"52"W.
- Elevations:** Numerous spot elevations (e.g., 172.84, 172.94, 172.98, 173.09, 173.12, 173.19, 173.24, 173.34, 173.39, 173.44, 173.49, 173.54, 173.59, 173.64, 173.69, 173.74, 173.79, 173.84, 173.89, 173.94, 173.99, 174.04, 174.09, 174.14, 174.19, 174.24, 174.29, 174.34, 174.39, 174.44, 174.49, 174.54, 174.59, 174.64, 174.69, 174.74, 174.79, 174.84, 174.89, 174.94, 174.99, 175.04, 175.09, 175.14, 175.19, 175.24, 175.29, 175.34, 175.39, 175.44, 175.49, 175.54, 175.59, 175.64, 175.69, 175.74, 175.79, 175.84, 175.89, 175.94, 175.99, 176.04, 176.09, 176.14, 176.19, 176.24, 176.29, 176.34, 176.39, 176.44, 176.49, 176.54, 176.59, 176.64, 176.69, 176.74, 176.79, 176.84, 176.89, 176.94, 176.99, 177.04, 177.09, 177.14, 177.19, 177.24, 177.29, 177.34, 177.39, 177.44, 177.49, 177.54, 177.59, 177.64, 177.69, 177.74, 177.79, 177.84, 177.89, 177.94, 177.99, 178.04, 178.09, 178.14, 178.19, 178.24, 178.29, 178.34, 178.39, 178.44, 178.49, 178.54, 178.59, 178.64, 178.69, 178.74, 178.79, 178.84, 178.89, 178.94, 178.99, 179.04, 179.09, 179.14, 179.19, 179.24, 179.29, 179.34, 179.39, 179.44, 179.49, 179.54, 179.59, 179.64, 179.69, 179.74, 179.79, 179.84, 179.89, 179.94, 180.04, 180.09, 180.14, 180.19, 180.24, 180.29, 180.34, 180.39, 180.44, 180.49, 180.54, 180.59, 180.64, 180.69, 180.74, 180.79, 180.84, 180.89, 180.94, 180.99, 181.04, 181.09, 181.14, 181.19, 181.24, 181.29, 181.34, 181.39, 181.44, 181.49, 181.54, 181.59, 181.64, 181.69, 181.74, 181.79, 181.84, 181.89, 181.94, 181.99, 182.04, 182.09, 182.14, 182.19, 182.24, 182.29, 182.34, 182.39, 182.44, 182.49, 182.54, 182.59, 182.64, 182.69, 182.74, 182.79, 182.84, 182.89, 182.94, 182.99, 183.04, 183.09, 183.14, 183.19, 183.24, 183.29, 183.34, 183.39, 183.44, 183.49, 183.54, 183.59, 183.64, 183.69, 183.74, 183.79, 183.84, 183.89, 183.94, 183.99, 184.04, 184.09, 184.14, 184.19, 184.24, 184.29, 184.34, 184.39, 184.44, 184.49, 184.54, 184.59, 184.64, 184.69, 184.74, 184.79, 184.84, 184.89, 184.94, 184.99, 185.04, 185.09, 185.14, 185.19, 185.24, 185.29, 185.34, 185.39, 185.44, 185.49, 185.54, 185.59, 185.64, 185.69, 185.74, 185.79, 185.84, 185.89, 185.94, 185.99, 186.04, 186.09, 186.14, 186.19, 186.24, 186.29, 186.34, 186.39, 186.44, 186.49, 186.54, 186.59, 186.64, 186.69, 186.74, 186.79, 186.84, 186.89, 186.94, 186.99, 187.04, 187.09, 187.14, 187.19, 187.24, 187.29, 187.34, 187.39, 187.44, 187.49, 187.54, 187.59, 187.64, 187.69, 187.74, 187.79, 187.84, 187.89, 187.94, 187.99, 188.04, 188.09, 188.14, 188.19, 188.24, 188.29, 188.34, 188.39, 188.44, 188.49, 188.54, 188.59, 188.64, 188.69, 188.74, 188.79, 188.84, 188.89, 188.94, 188.99, 189.04, 189.09, 189.14, 189.19, 189.24, 189.29, 189.34, 189.39, 189.44, 189.49, 189.54, 189.59, 189.64, 189.69, 189.74, 189.79, 189.84, 189.89, 189.94, 190.04, 190.09, 190.14, 190.19, 190.24, 190.29, 190.34, 190.39, 190.44, 190.49, 190.54, 190.59, 190.64, 190.69, 190.74, 190.79, 190.84, 190.89, 190.94, 190.99, 191.04, 191.09, 191.14, 191.19, 191.24, 191.29, 191.34, 191.39, 191.44, 191.49, 191.54, 191.59, 191.64, 191.69, 191.74, 191.79, 191.84, 191.89, 191.94, 191.99, 192.04, 192.09, 192.14, 192.19, 192.24, 192.29, 192.34, 192.39, 192.44, 192.49, 192.54, 192.59, 192.64, 192.69, 192.74, 192.79, 192.84, 192.89, 192.94, 192.99, 193.04, 193.09, 193.14, 193.19, 193.24, 193.29, 193.34, 193.39, 193.44, 193.49, 193.54, 193.59, 193.64, 193.69, 193.74, 193.79, 193.84, 193.89, 193.94, 193.99, 194.04, 194.09, 194.14, 194.19, 194.24, 194.29, 194.34, 194.39, 194.44, 194.49, 194.54, 194.59, 194.64, 194.69, 194.74, 194.79, 194.84, 194.89, 194.94, 194.99, 195.04, 195.09, 195.14, 195.19, 195.24, 195.29, 195.34, 195.39, 195.44, 195.49, 195.54, 195.59, 195.64, 195.69, 195.74, 195.79, 195.84, 195.89, 195.94, 195.99, 196.04, 196.09, 196.14, 196.19, 196.24, 196.29, 196.34, 196.39, 196.44, 196.49, 196.54, 196.59, 196.64, 196.69, 196.74, 196.79, 196.84, 196.89, 196.94, 196.99, 197.04, 197.09, 197.14, 197.19, 197.24, 197.29, 197.34, 197.39, 197.44, 197.49, 1

Local Preliminary Engineering Plans - 2017



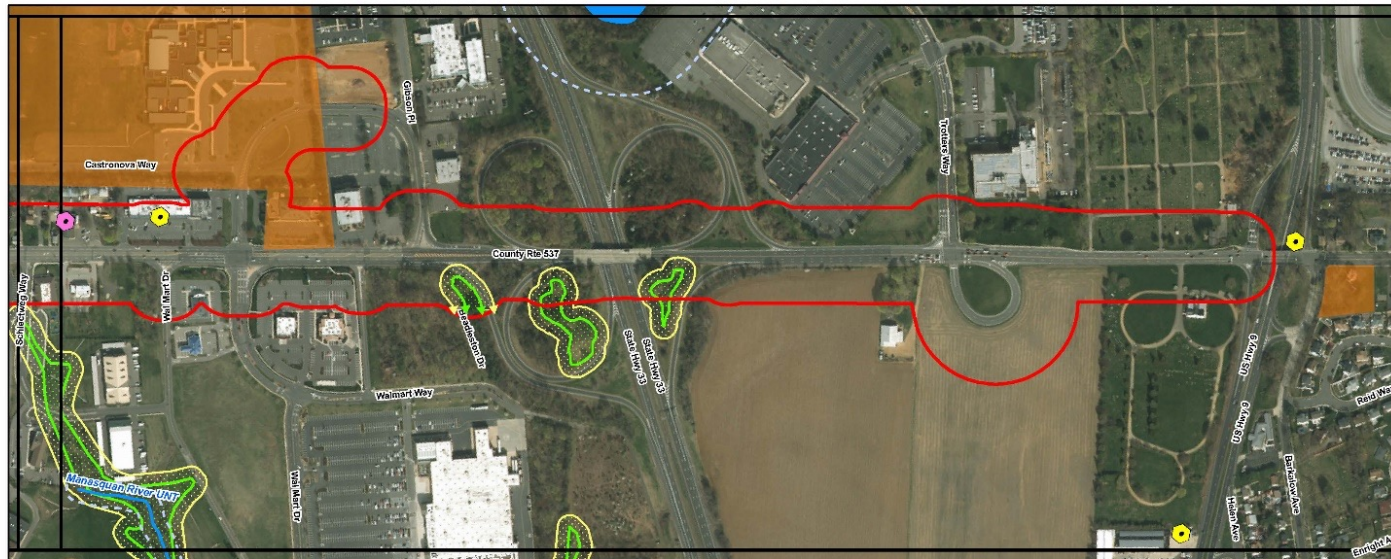
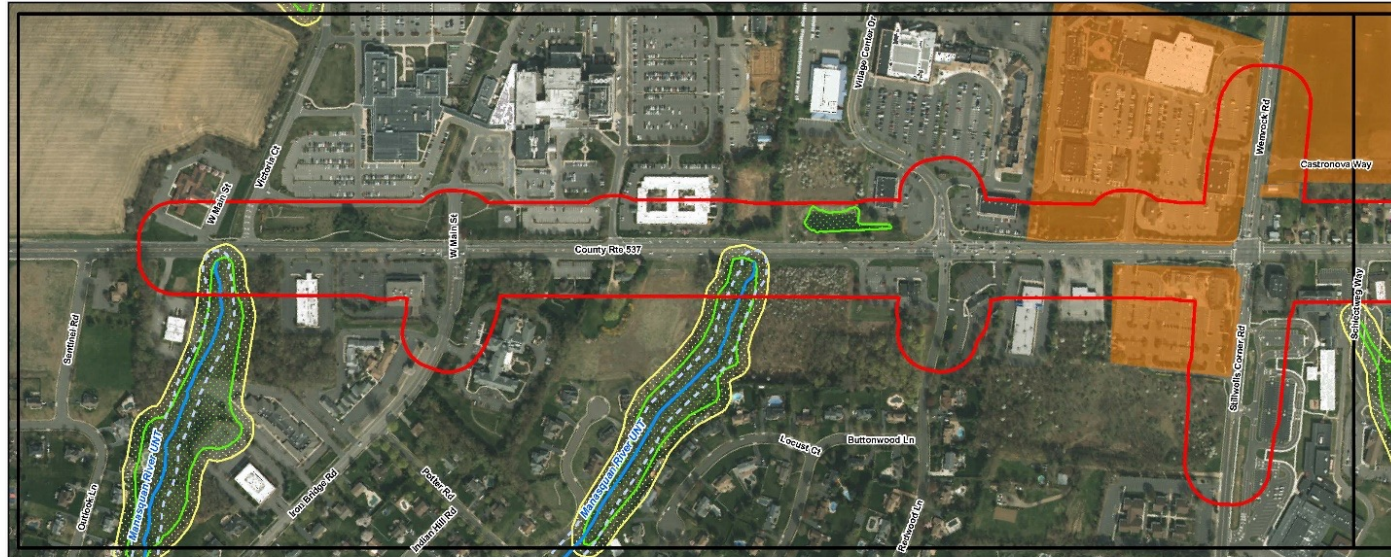
Local Preliminary Engineering Plans - 2017



LPE - ROW

- Total Property Impacts - 35
- Total Full Property Acquisitions - 9 (including 2 commercial properties)
- ROW acquisitions required for the proposed storm water management basins
 - Locations of which are yet to be determined
 - Potential basin location at existing residential property to be acquired (Lots 40, 41 and 42 in Block 69)

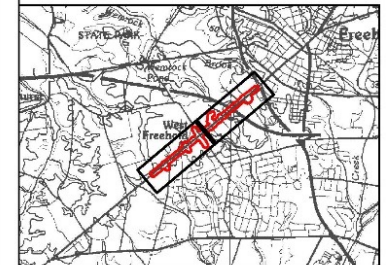
Environmental Constraints Map



Legend

- Study Area
- Historic Properties
- Known Contaminated Site
- Potential Hazardous Site
- Freshwater Wetland
- Wetland Transition Area
- Riparian Zone Boundary
- Stream or Waterbody

Sources:
Freshwater Wetlands modified to approximate limits by Amy S. Greene
Environmental Consultants Inc. based upon field investigation, January 2012.
This map was developed using the most recent New Jersey Department
of Environmental Protection Geographic Information System digital data, but this
secondary product has not been verified by NJDEP and is not State authorized.
New Jersey 2015 High Resolution Orthorectification, NAD83 NJ State
Plane Foot, M/S20 Tiers, State of New Jersey - Office of Information Technology,
Office of Geographic Information Systems (OGIS), Trenton, NJ, February 2015



Environmental Constraints Map

CR 537 Corridor Improvements
between Sentinel Road & US Route 9
Freehold Township
Monmouth County, New Jersey

ASGECI Project # 3934



450
Feet

AMY S. GREENE
ENVIRONMENTAL
CONSULTANTS

Environmental Documentation

- Section 106 (Cultural Resources)
- NEPA Document (Categorical Exclusions Documentation)

Permits

| Agency | Approval |
|---------------------------------------|--|
| Freehold Soil Conservation District | Soil Erosion & Sediment Control Plan Certification |
| NJ State Historic Preservation Office | Determination of No Adverse Effect or Adverse Effect (Memorandum of Agreement) |
| NJDEP | Freshwater Wetlands Permit |
| NJDEP | Water Quality Certificate |
| NJDEP | Flood Hazard Area Permit |
| NJDEP | Storm Water Management Plan Approval |

Cultural Resources

- Cultural Resources Investigation performed under Section 106 of the National Historic Preservation Act



Cultural Resources

- Phase I/II Archaeological Survey
- Intensive-level Historic Architectural Survey
- Seven archaeological sites identified along CR 537
- Historic Properties include Walker-Combs-Hartshorne House and Dr. Thomas Henderson House Site
- Adverse Effects on historic properties resolved through development of a Memorandum of Agreement and implementation of mitigation measures
- Coordination with NJDOT, FHWA and NJ SHPO

Community Involvement (LPE Phase)

- February 9, 2016, Local Officials Meeting No. 1 with the Township of Freehold
- February 1, 2017, Local Officials Meeting No. 2 with the Township of Freehold
- February 15, 2017, Community Stakeholders Meeting
- Summer 2017, Public Information Center

Project Schedule

- Completion of Preliminary Engineering Phase - February 2018
- Final Design Phase & ROW Acquisitions - Fall 2018 to Spring 2021
- Construction Authorization FY 2021 – September 30, 2021
- Construction - Fall 2021 to Fall 2023

Project Contact Information

- Daria Jakimowska, Monmouth County Project Manager
- Phone: (732) 431-7760
- Email: engineer@co.monmouth.nj.us
- **Monmouth County Web site address:**
 - Go to: www.visitmonmouth.com
 - Select Monmouth County , New Jersey - County Home Page
 - Select Departments from the red top menu bar
 - Select 'Engineering' from the list
 - Select 'Bridge & Road Projects' from the right side box
 - Click 'Freehold – West Main Street (CR537)'
- Written comments