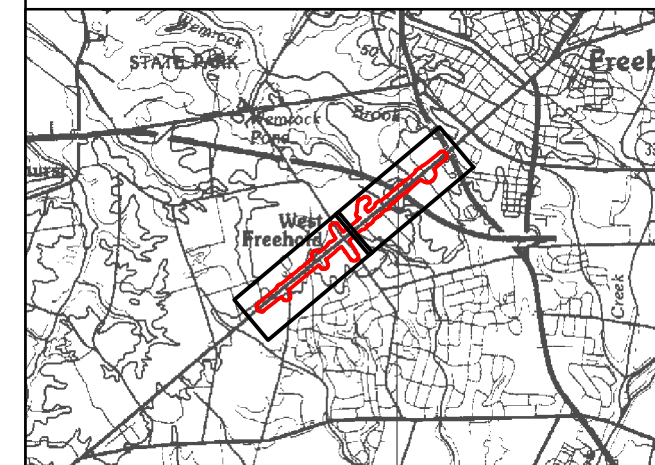
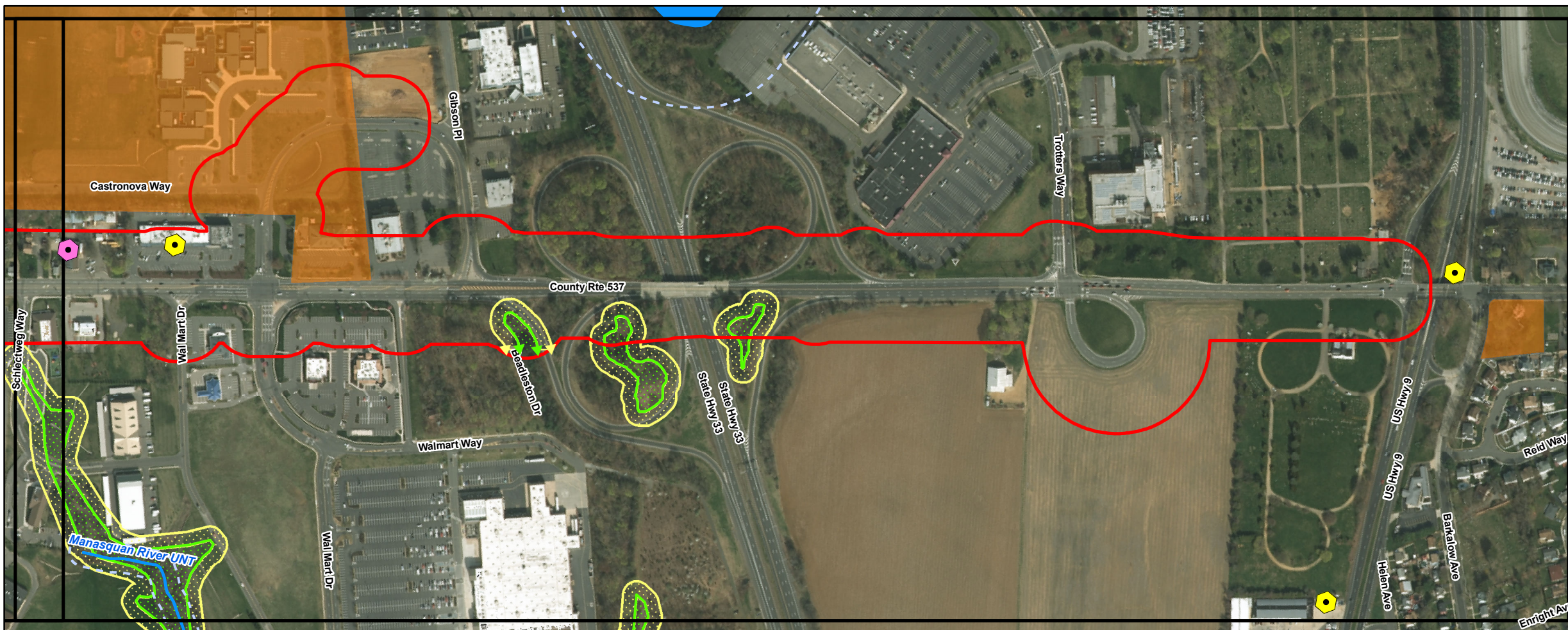


**Legend**

- Study Area
- Historic Properties
- Known Contaminated Site
- Potential Hazardous Site
- Freshwater Wetland
- Wetland Transition Area
- Riparian Zone Boundary
- Stream or Waterbody

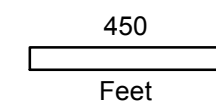
Sources:  
 Freshwater Wetlands modified to approximate limits by Amy S. Greene Environmental Consultants Inc. based upon field investigation, January 2012.  
 This map was developed using the most recent New Jersey Department of Environmental Protection Geographic Information System digital data, but this secondary product has not been verified by NJDEP and is not State-authorized.  
 New Jersey 2015 High Resolution Orthophotography, NAD83 NJ State Plane Feet, MrSID Tiles, State of New Jersey - Office of Information Technology, Office of Geographic Information Systems (OGIS), Trenton, NJ, February 2016.



**Environmental Constraints Map**

CR 537 Corridor Improvements  
 between Sentinel Road & US Route 9  
 Freehold Township  
 Monmouth County, New Jersey

ASGECI Project # 3934



AMY S. GREENE  
 ENVIRONMENTAL  
 CONSULTANTS